

# LINDY®

## CONNECTION PERFECTION

---

### Wireless Projector Server

*User Manual*

*English*

---



No. 32700

[www.lindy.com](http://www.lindy.com)

CE

FCC

Tested to Comply with FCC Standards  
For Home and Office Use!



## Introduction

Thank you for choosing the LINDY Wireless Projector Server. This product quickly turns your existing wired projector into a high-end wireless projector.

A split screen multicasting feature allows up to four users to simultaneously use a single projector at once, with multiple users logged onto the server. All users need to do to start a projection is enable their WiFi and connect to the Wireless Projector Server using the Wireless Projector Server Utility.

These features save you time swapping connection cables between computers or loading storage media onto a wired in computer helping make your projector part of an easier, simpler and more professional presentation system.

## Package Contents

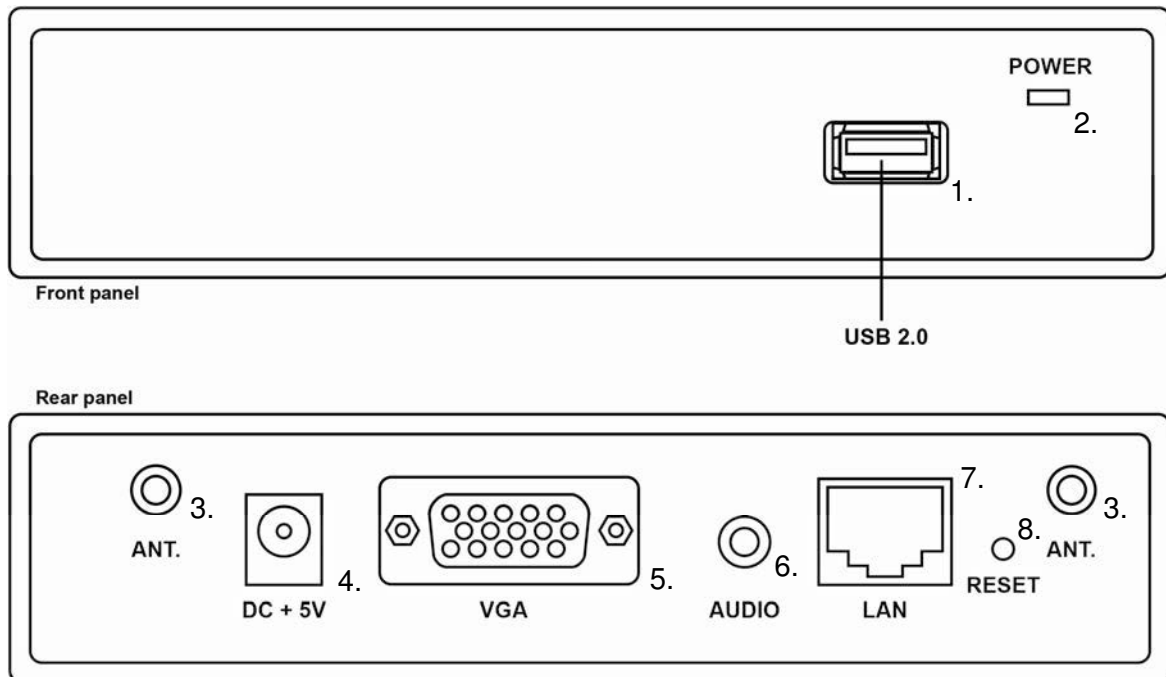
- LINDY Wireless Projector Server
- Multi-country 5V 2.5A PSU (UK, Europe, USA, Australia, China)
- 2x Wireless dipole Antenna with SMA connectors
- 4 Pozidriv, 2 slot screws & wall mounting bracket
- Software CD includes:
  - Software for Windows & Mac OS, MobiShow for Windows Mobile 5/6
  - VAC.exe (for audio projection)
  - VDD.exe (for virtual extended display)
  - IB Maker (for changing the Wireless Projectors default menu screen)
  - PtG Converter (for converting PowerPoint files for use with MobiShow)
  - SNMP Manager (for Wireless Projector Server device management)
- This Manual

## Features

- Supports Windows 2000, XP, Vista & Windows 7, Mac OSX 10.5 and later
  - 4-to-1 split screen projection - connect one projector to four computers
  - 1-to-4 screen projection - connect one computer to four Wireless Projector Servers
  - Conference Control - allows moderators to control access to projectors
  - Session security login IEEE standard 64/128 bit WEP, WPA, WPA2 key & Gatekeeper
  - High Performance screen projection with audio & multimedia playback.
  - Supports H.264 HD video streaming
  - Supports OSD (On-Screen Display) image uploading
  - Supports SNMP (Simple Network Management Protocol) device management
  - Supports AP (Access Point) Client Mode
  - Compatible with MobiShow - make presentations from your Smartphone
-

## Specification

## Connections



1. USB for mouse and/or keyboard
2. Power LED – Red/Green
3. Antenna ports
4. 5-VDC power
5. VGA Output
6. 3.5mm Stereo Audio Output
7. RJ-45
8. Reset button

## Specifications

- Standards - IEEE 802.11b/g/n (2.4 GHz), 802.3/3u (10BASE-T/100BASE-TX)
- IP Address Configuration – Automatic & Manual DHCP
- Channels - 11 US/Canada , 13 Europe , 14 Japan
- Wireless Encryption/Key - IEEE standard 64/128bit WEP/WPA/WPA2-PSK
- Operating Frequency - 2.4 GHz 300Mbps LAN 10/100Mbps
- Wireless Range (Maximum) - 100m (300ft)\*
- Supported Media Formats - MP3, MPEG1 (.mpg, .dat), MPEG2 (.mpg, .VOB), MPEG4 (.wmv9, .asf), DivX 3/4/5, Xvid, H.264 (.mov)
- Output Resolutions - 800x600 / 1024x768 / 1280x768 / 1280x800, 16/32 bit colour depth, up to 30 fps
- Dimensions 13.9 x 10.8 x 3.7 cm (WxDxH) / Weight - 0.5 kg

\* The actual operational distances depends on the surrounding environment

Installation

Important

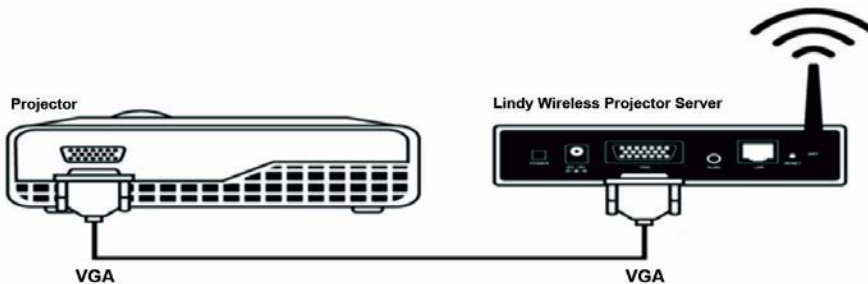
BEFORE STARTING AN INSTALLATION ENSURE ALL DEVICES ARE POWERED OFF

The Wireless Projector Server is capable of receiving separate audio & video signals up to 100m from a transmission source. Actual operational distances depend on the construction of the surrounding building and any walls or floors that are situated between the transmitting computer and the Wireless Projector Servers receiving antenna.

Quick Setup

These steps follow an installation using VGA equipment with Windows XP

- 1. Connect the Wireless Projector Server to a projector with a VGA cable. Power up the projector



- 2. Power on the Wireless Projector Server. The Power LED will turn Red to Green and the projector screen will show the default menu screen as below. The Wireless Projector Server is now ready to use.



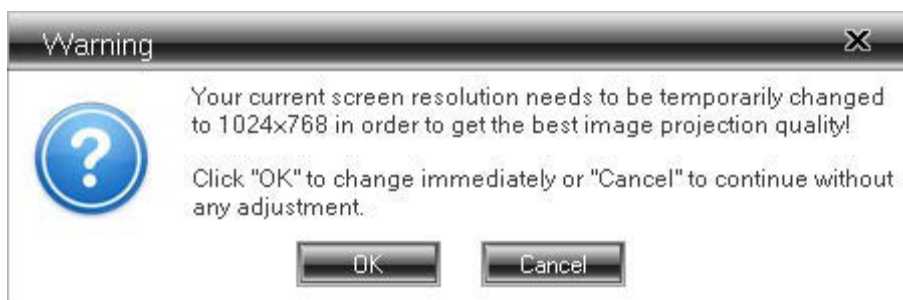
3. Enable your computers WiFi and connect your computer with the Wireless Projector Server WLAN via Windows Control Panel > Network Settings.
4. Open your preferred web browser. If you use WiFi to connect to the internet this should redirect automatically to the Wireless Projector Server Management page. If not enter the IP address. The default IP address of the Wireless Projector Server is 192.168.100.10 or refer to the IP address shown on the left corner of the projector screen



5. Unless already installed from the software disc download the required OS Utility and follow its Installation Wizard. Ensure your firewall allows the Wireless Projector Server software to pass through. After installation you will see the Wireless Projector Server shortcut on your desktop



6. Run the Wireless Projector Server. The following Warning message will display



7. Select *Cancel* to continue without adjusting your system settings. You can make adjustments to display settings later via Windows Control Panel > Display
8. Select the Wireless Projector Server you require - identified by the IP Address shown on the projector screen.
9. Enter the Login Code shown in the top right of the projector screen
10. The Wireless Projector Server user Interface will open



- 11. Click the *Play* button to start a mirrored projection of your current desktop or active program
- 12. Select the different split screens quadrants by clicking the 1/2/3/4 buttons around the *Play* button
- 13. Select & login to multiple Wireless Projector Servers in the *Device List* to project to up to four different projectors at once - multicasting
- 14. Click the *Stop* button to stop a presentation and return to the default menu screen
- 15. Click the *Pause* button to hold a presentation on its current frame. Any Changes on your desktop screen will not show on the projector screen until you click the *Pause* button again
- 16. Closing the Wireless Projector Server will return the projector screen to the default menu screen

LOGIN CODE: **1234**

## Wireless Presentation System

**Quick Guide**

1. Make sure your WLAN is enabled, and connect to Wireless Presentation System.
2. Open your browser, or enter the IP address (refer to below server IP address)
3. Click on "Download", and execute the installation program.
4. Make sure your personal firewall allows WPS software to pass through!
5. Enter the LOGIN CODE to start projection!

Server IP: **192.168.100.10**    SSID: WPS  
Resolution: 1024x768            Channel: 7  
Version: 3.2.4.4                Security: None

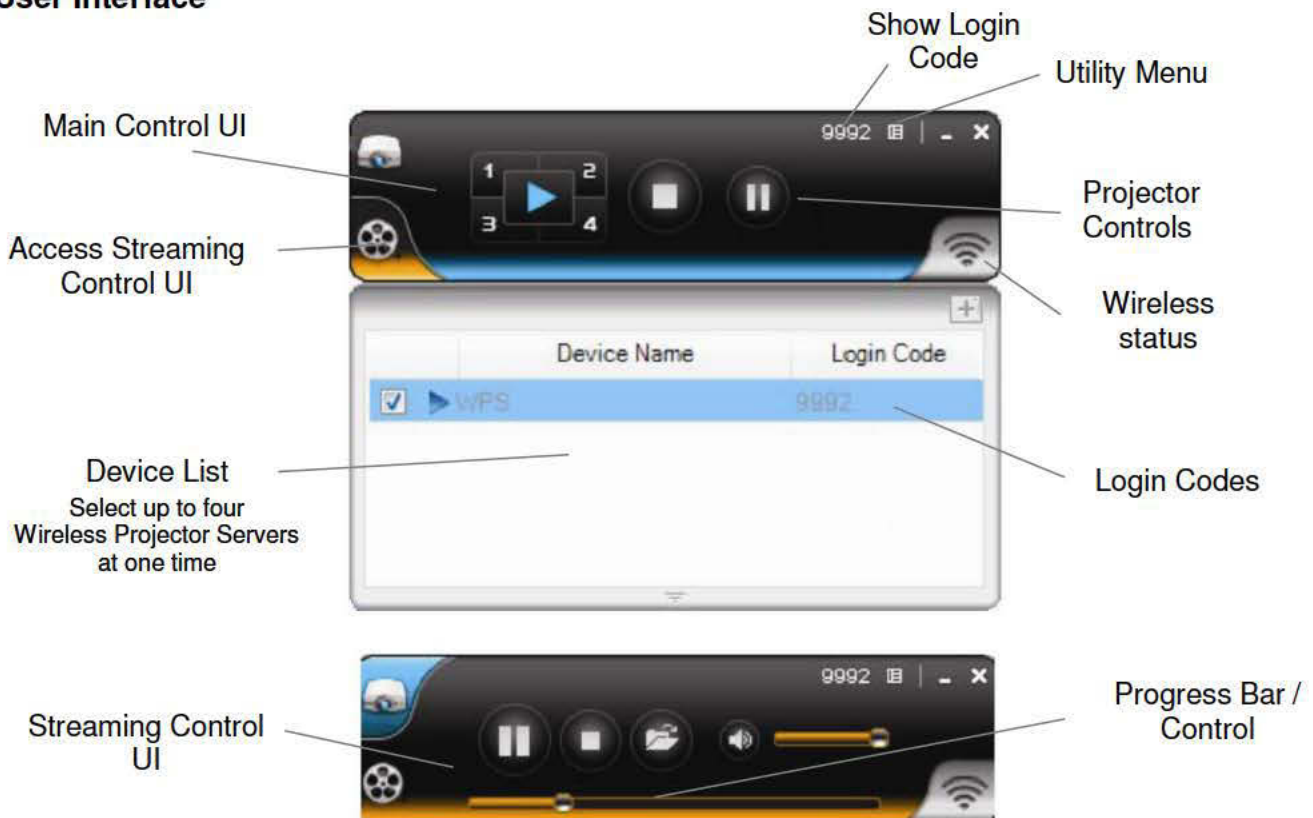


Operation

Using the Windows Client Utility

1. Install all the software & drivers included on the software disc and turn on your WLAN
2. Click on the *Wireless Projector Server* desktop icon. The Utility will automatically search for the Wireless Projector Server. When the Wireless Projector Server is found a Login dialog will appear
3. Enter the four digit Login Code shown in the upper left corner of the projector screen

User Interface



Main Control Buttons

- Full Screen Single Projection
- Project to Split 1
- Project to Split 2
- Project to Split 3
- Project to Split 4
- Stop Projection/s
- Pause Projection/s

Streaming Control Buttons

- Start Playing Video/Music
- Stop Video/Music
- Open Video/Music Folder
- Mute
- Volume Control



### Show Login Code

Clicking the four digit code icon in the upper-right corner of the user Interface will display a Login Code in the upper-left corner of your desktop. This display will close automatically after 10 seconds. Clicking anywhere on the desktop during this time will cancel this display

### Utility Menu

Clicking the Utility Menu icon in the top right of the user Interface will open the Utility Menu Dropdown



*Show Login Code* - displays the Login Code in the same way as clicking the four digit code in the user Interface

*Web Admin...* - opens the *Web Admin Management Page*, described later

*Search Server...* - refreshes the Wireless Projector Server list

*Projection Quality* - gives options to choose between *Normal* for a faster projection speed with lower image quality or *Best* for clearer screen image quality, but slower projection speed

*Projection Source* - after installing the *VDD.exe* driver, you can select to project a Virtual Extended Screen across up to four Wireless Projector Servers. Use Windows Control Panel > Display to make changes to your Display settings, screen setup and arrangement

*Send Audio to Display* - after installing the *VAC.exe* driver, you can select to playback audio through the Wireless Projector Server's 3.5mm audio output. For best results it is recommended that audio is played back via the audio output otherwise there will be noticeable sync issues with video

*Auto WiFi Connect* - automatically connects to a previously used Wireless Projector Server

---

*Auto Power Management* - changes your computers power management scheme to the highest performance for making presentations. Selecting this option enables or disables these settings and restores your previous power scheme settings immediately

*Hide UI* - hides or displays the user Interface on the projection screen

*Advanced Screen Capture* - see tip windows and other layered windows, including the main UI on the connected display. In this mode the mouse cursor may blink from time-to-time on the projector screen - for the best results it is recommended this feature is disabled

*Repeat* - plays back the current video/audio file

*Make Pns Token...* - opens the Plug & Show Token wizard, described later

*Copy Application to desktop...* - copies the application to your desktop

*About* - shows system information including product model name, client version, IP address and additional information

*Exit* - stops the current presentation and closes the application immediately

---

## Web Admin Management

1. Connect to the Wireless Projector Server via WLAN and open your preferred web browser
2. Clicking the *Web Admin...* option should automatically open to the Wireless Projector Server Web Admin Management Page. If not, enter the IP address shown on the projection screen into your web browser. The default IP address is 192.168.100.10

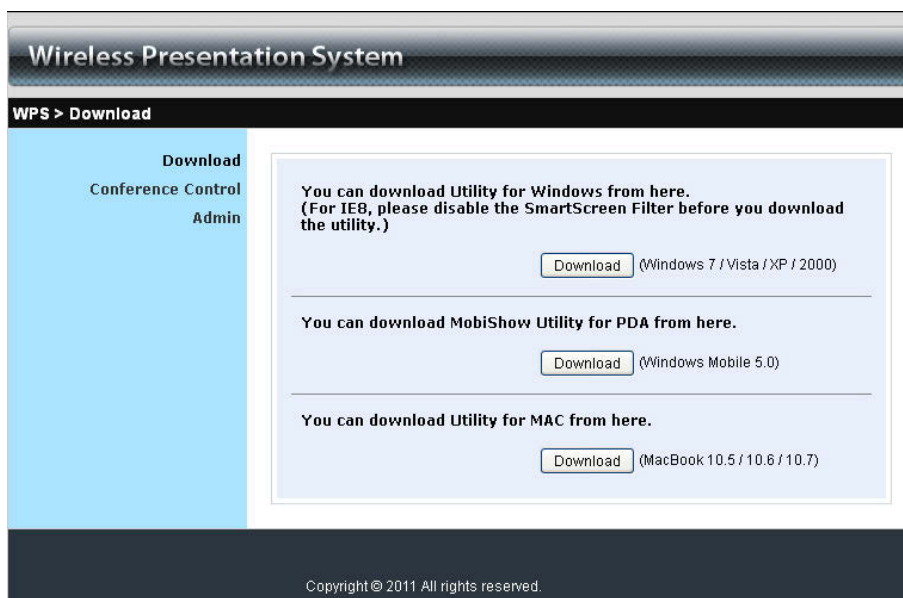


The Web Admin Management Page consists of three sections;

- Download
- Conference Control
- Admin

### Download

Selecting the *Download* option opens the download dialogue



From here you can download and run Windows or Mac versions of the Wireless Projector Server Utility installation program. Select the relevant program for your Operating System and follow the Installation Wizard

Once the installation is complete, a shortcut icon for the Wireless Projector Server will appear on your desktop



### Conference Control

This function allows you to host multiple presentations without swapping VGA connection cables between computers. Up to 4 users can project at once, with multiple users logged in



The default *user Name* and *Password* are **trainer**

After login you will see three columns user List. This shows the current status information of all the users connected to the Wireless Projector Server

- Computer Name
- Play Control
- IP Address

In the *Play Control* column six buttons indicate & control each user’s status on the projection screen;

- Play Full screen
- Play on Split #1
- Play on Split #2
- Play on Split #3
- Play on Split #4
- Stop Presentation



## Admin

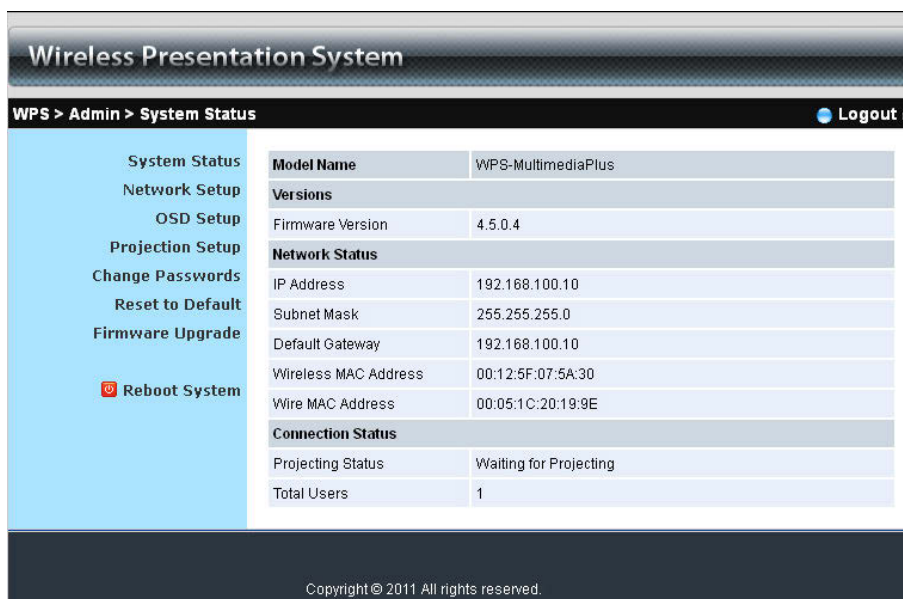
This section allows you to view and set various settings for the Wireless Projector Server



The default *user Name* and *Password* are **admin**

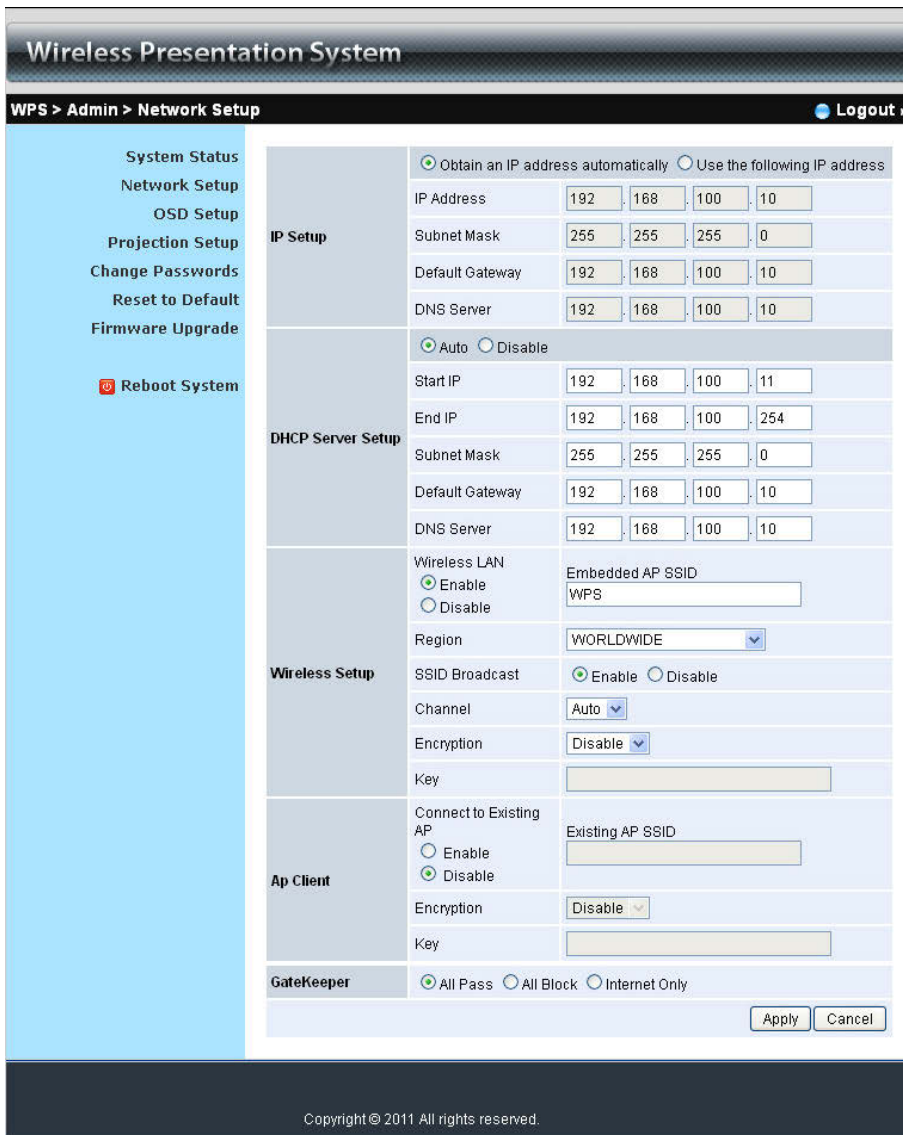
After login you will see several options;

- System Status
- Network Setup
- OSD Setup
- Projection Setup
- Change Passwords
- Reset to Default
- Firmware Upgrade
- Reboot System



### System Status

This section shows information on the current system status; *Model Name, Firmware Version, IP Address, Subnet Mask, Default Gateway, Wireless Mac Address, Wire Mac Address, Projecting Status* and *Total users*



### Network Setup

The default setting of the Wireless Projector Server is DHCP Auto (Dynamic Host Configuration Protocol). When the Wireless Projector Server is connected to a LAN that already has a DHCP server, the Wireless Projector Server will take an IP address assigned to it by that server. When the Wireless Projector Server is connected to a LAN that does not have a DHCP server, the Wireless Projector Server becomes the DHCP server in that network.

If you do not require the DHCP function it is recommended to select **Disable**

## IP Setup:

- Select *Obtain IP address automatically* or *Use the following IP address*
- IP Address - the default value is 192.168.100.10
- Subnet Mask - the default value is 255.255.255.0
- Default Gateway - the default value is 192.168.100.10
- DNS Server - the default value is 192.168.100.10

## DHCP Server Setup:

- Select *Auto/Disable Enable*
- Start IP - the start IP address of the DHCP Server
- End IP - the end IP address of the DHCP Server
- Subnet Mask - the default value is 255.255.255.0
- Default Gateway - the default value is 192.168.100.10
- DNS Server - the default value is 192.168.100.10

## Wireless Setup:

- Wireless LAN - the default value is *Enable*
- Connect to Existing AP - input the SSID of the Wi-Fi AP you want to connect to
- Region - the default value is *Worldwide*
- SSID - SSID string, max. Length is 32 bytes
- SSID Broadcast - the default value is *Enable*
- Channel - use this to set *Fixed Channel* or *Auto*. In *Auto* the Wireless Projector Server will scan all available wireless channels and select one automatically when powered on
- Encryption - select *Disable* or set WEP/WPA/WPA2 in 64 or 128bit with a ASCII or HEX string
- Key - if Encryption is enabled, you will have to set the key value here according to the encryption mode selected

## Gatekeeper:

*Gatekeeper* is designed for maintaining enterprise network security within the Wireless Projector Server

- All Pass - allows Guest users to access all office networks and Internet connections
- All Block - blocks Guest users to access all office networks (LAN)
- Internet Only - blocks Guest users from office networks (LAN) but still reserves Internet connection capability, if available

Apply - applies any changes made to these settings

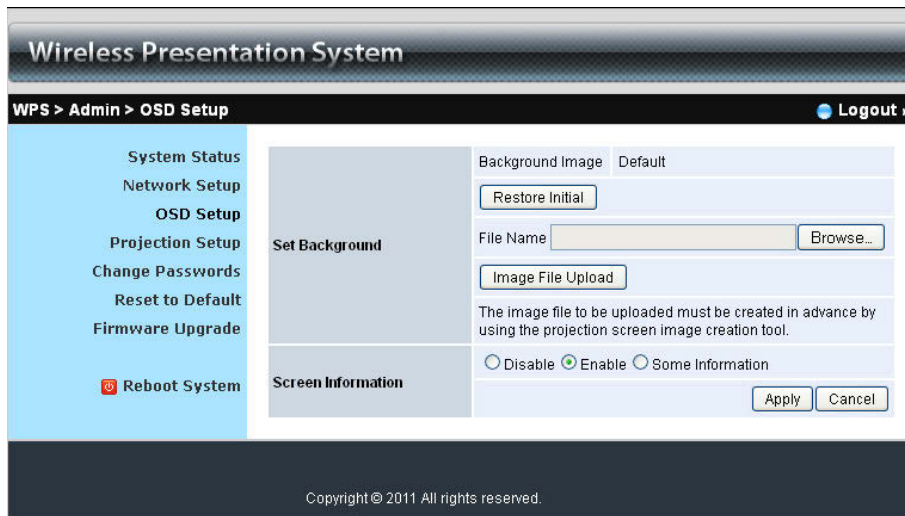
Cancel - cancels any changes made to these settings

---



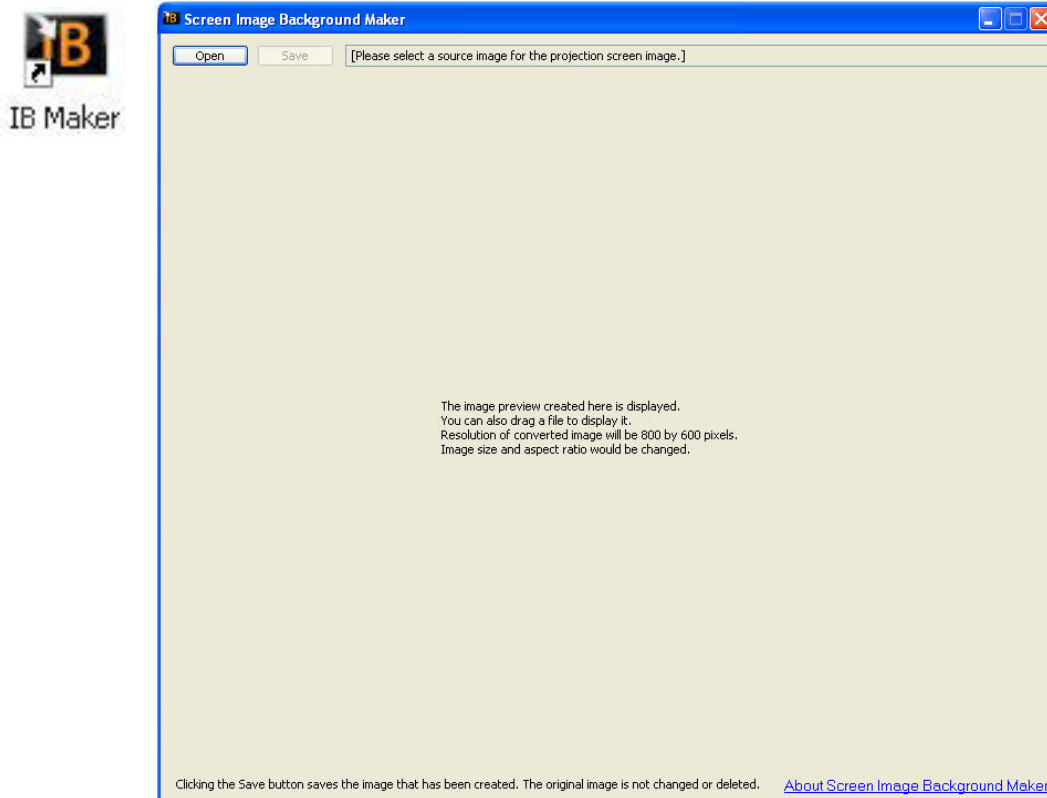
## OSD Setup

This section allows you to change or restore the default projector screen background. You can also set what information is displayed on the projector screen



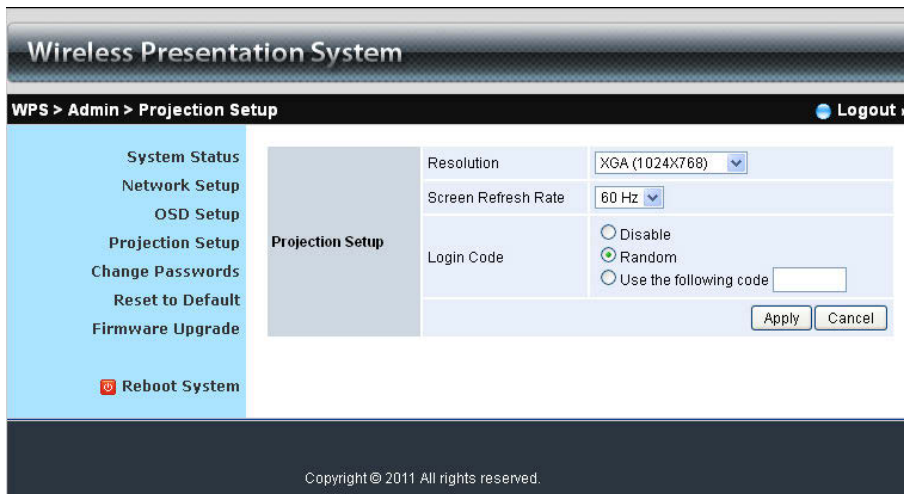
To use a different image as a background it first needs to be converted into a .ib image using the *IB Maker utility* from the software disc. This can then be uploaded to the Wireless Projector Server by Browsing to the new .ib images location and clicking *Image File Upload*

To use the *IB Maker* click the desktop icon and follow the on screen instructions. Images to be converted should be 800 x 600px and saved as a .jpg or bitmap images first



### Projection Setup

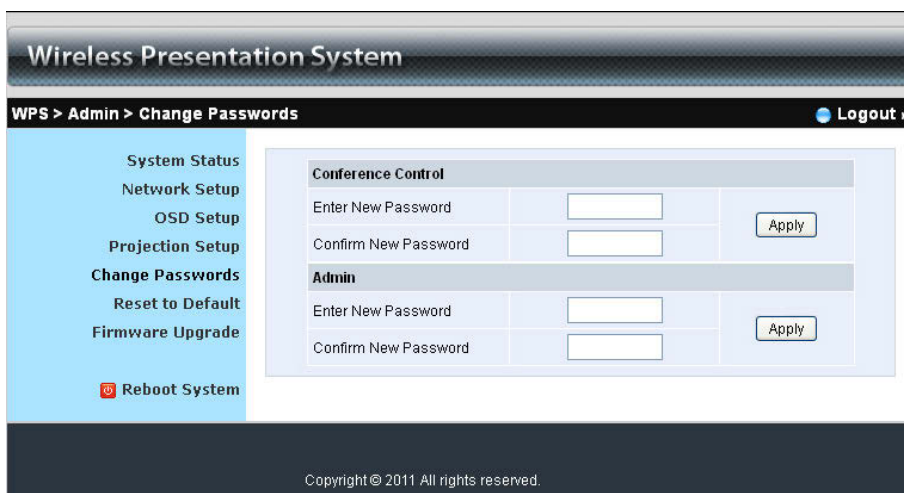
This section gives you options to adjust the visual qualities of the your projection



- Resolution - XGA (1024 x 768), WXGA(1280 x 768, 1280 x 800) and SVGA(800 x 600). The default value is XGA.
- Screen Refresh Rate - this is the VGA output refresh rate and provides 60Hz and 75Hz rates for different kinds of projectors.
- Login Code - select Disable, Random or Use the following code to set a specified 4-character Login Number
- Apply - applies any changes made to these settings
- Cancel - cancels any changes made to these settings

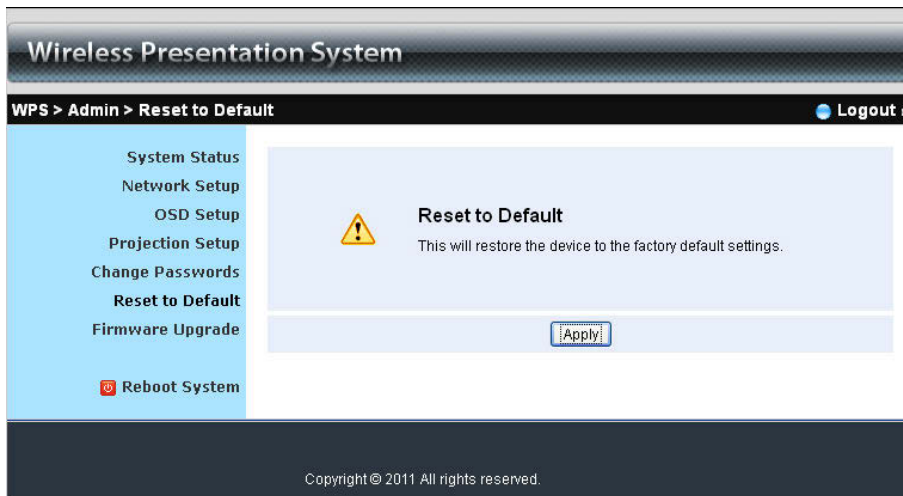
### Change Passwords

This section gives you the option to change the passwords for both *Conference* and *Admin Controls*. Passwords can be up to eight alphanumeric characters long



## Reset to Default

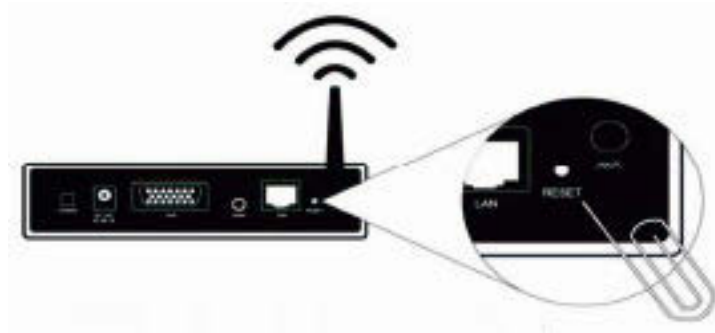
This section allows you to restore the Wireless Projector Server to its' default factory settings



- Click *Apply* to restore the factory default settings

To hard reset the default factory settings

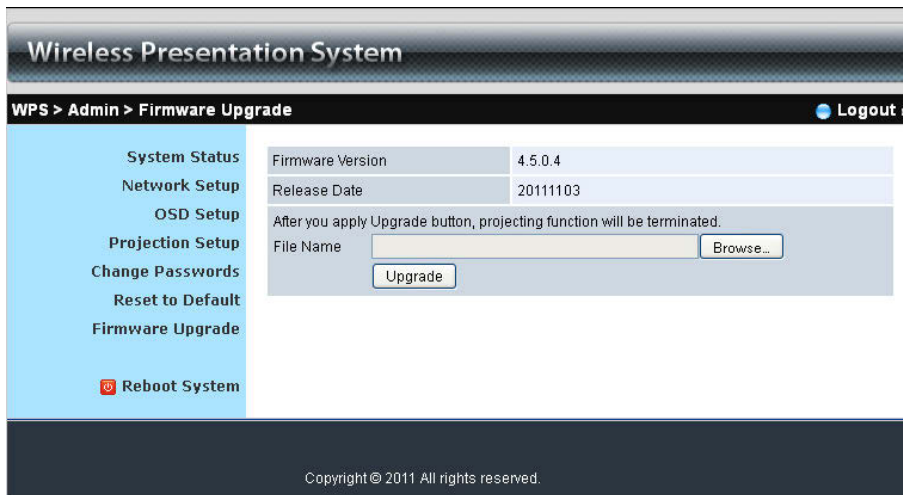
1. Power down the Wireless Projector Server
2. Press & hold the *Reset* button on the back of the Wireless Projector Server



3. Turn on the Wireless Projector Server
4. Wait for 15 seconds and release the *Reset* button
5. The default factory settings will be restored

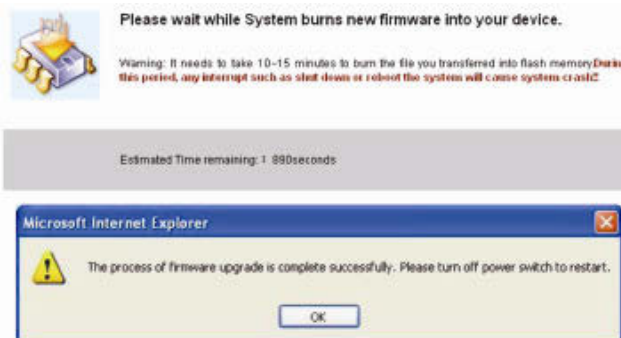
## Firmware Upgrade

This section shows further information about your *Firmware Version* and allows you to upgrade the Wireless Projector Servers Firmware



To upgrade the Wireless Projector Servers Firmware;

1. Download the latest *Firmware Image* file from the Lindy Web site
2. Browse for the downloaded *Firmware Image* on your computer and click the *Upgrade* button in the Wireless Projector Server Web Admin Management Page to start the install
3. A warning message will show with a countdown



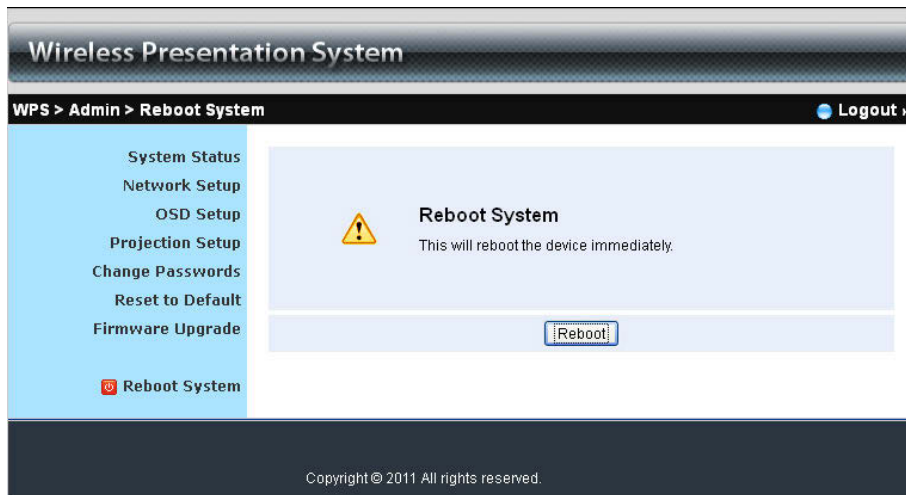
4. After a few minutes, a complete message will be shown on screen
5. Restart the Wireless Projector Server for any changes to take effect

### Important

DO NOT TURN OFF THE POWER SUPPLY UNTIL THE RESTART COMPLETES

## Reboot System

This section gives you the option of remotely rebooting the Wireless Projector Server



1. Click *Reboot* to reboot the Wireless Projector Server
2. The Wireless Projector Server will immediately start to reboot

### Important

DO NOT TURN OFF THE POWER SUPPLY UNTIL THE RESTART COMPLETES

## Additional Software

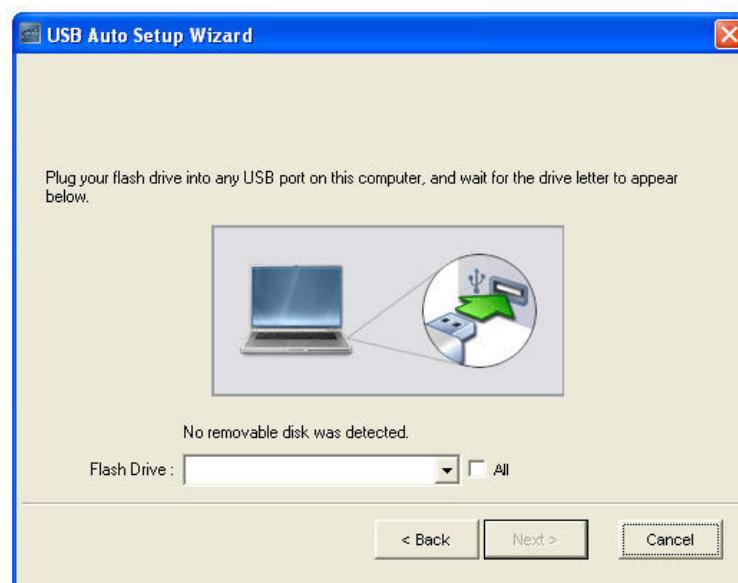
### Making a Pns Token

The *Pns Token USB Auto Setup Wizard* copies the Wireless Projector Server Utilities and drivers to a USB-drive

1. Select *Make Pns Token...* from the *Utility Menu* or click on the *Pns icon* in the WPS-MultiMediaPlus desktop folder



2. Follow the on screen instructions to copy files to a USB-drive



MobiShow



The *MobiShow App* is a FREE third party application that allows your Android, BlackBerry, iPhone to connect to the Wireless Projector Server through a Wi-Fi connection. The following instructions are for the Android v2.0 / BlackBerry -v2.0 / iPhone - v2.1 of the App. Graphics may vary from those shown

1. Download & install the *MobiShow App* from the App Store / App World / Google Play
2. Enable WiFi and connect to the Wireless Projector Server WLAN
3. Launch the *MobiShow App*
4. MobiShow will search for the Wireless Projector Server
5. When prompted enter the Login Code shown in the upper left corner of the projection screen to connect to the Wireless Projector Server

**Making a PC-less Presentation**

To make a PC-less presentation from your Smartphone using MobiShow select;

- PhotoSender to send still photos from your phone to the projector screen
- PtG to show a PowerPoint presentations .ppt from your Smartphone. Before using PtG you will need to convert the .ppt using the *PtG converter.exe* from the software disc
- MediaCenter to stream & control multimedia files from your phone

Button Descriptions

	Go to previous photo file		Go to previous page		Go to previous media file
	Start/Pause slide show		Go to previous step		Go to next media file
	Stop slide show		Go to next step		Decrease the volume level
	Go to next photo file		Go to next page		Increase the volume level
	Rotate to left-90 degree		Play		Mute/Un-mute
	Rotate to right-90 degree		Stop		



## Using the PtG Converter

The *PtG Converter* converts PowerPoint files for use with MobiShow

After installing the *PtG Converter* from the software disc the *PtG Converter* icon will appear on your desktop



After opening the *PtG Converter* the following UI will display on your desktop

### PtG Converter UI



- Click the *Convert* button to select a PowerPoint file .ppt to convert
- The *Preview* button allows you to expand or collapse the conversion preview
- Click the *Play* button to playback a selected PtG file
- Click the *Open* button to open a select a file for playback



## Declaration of Conformity

**LINDY Part Number:** 32700

**Description:** Wireless N VGA & Audio IP Server

We, LINDY Electronics LTD, hereby declare that the above product is in conformity with the EU Directive 2004/108/EC (Electromagnetic Compatibility), and 1999/5/EC R&TTE (Radio and Telecommunications Terminal Equipment).

The following standards were used to evaluate the product for electromagnetic compatibility:

**EN 55022:2010**

**EN 55024:2010**

**EN 61000-3-2:2006+A2:2009**

**EN 61000-3-3:2008**

**EN 300 328 V1.7.1 (2006-10)**

**EN 301 893 V1.5.1 (2008-12)**

**EN 301 489-1 V1.8.1 (2008-04)**

**EN 301 489-17 V2.1.1 (2009-05)**

**EN 62311:2008**

Date: 04 July 2012

Signature:



Name: Darren N. Casey

Position: Managing Director, LINDY Electronics LTD

LINDY Supplier Office Reference: 101111-720156

Geschäftsführer: Jürgen und Peter Lindenberg  
Amtsgericht Mannheim, HRB 789

LINDY-Elektronik GmbH  
Markircher Str. 20  
D-68229 Mannheim  
Tel. 0621 47005 0  
Fax 0621 47005 30  
E-Mail info@lindy.de

## **EG - Konformitätserklärung** ( EC - Declaration of Conformity )

Für das/die folgend bezeichnete/n Produkt/e

**LINDY WLAN Projector Server**  
**Art.-Nr.: 32700**

wird hiermit bestätigt, dass es den Anforderungen entspricht, die in den **EU Richtlinien 1999/5/EG (R&TTE)** und **2004/108/EG (elektromagnetische Verträglichkeit)** festgelegt sind. Diese Erklärung gilt für alle Exemplare der o.g. Artikelnummer/n.

Zur Beurteilung des Produktes wurden folgende Normen herangezogen:

**ETSI EN 300 328 V1.7.1 (2006-10)**  
**ETSI EN 301 893 V1.5.1 (2008-12)**  
**EN 62311:2008**  
**ETSI EN 301 489-1 V1.8.1 (2008-04)**  
**ETSI EN 301 489-17 V2.1.1 (2009-05)**  
**EN 55022 /A1:2007**  
**EN 55024 /A2:2003**  
**EN 61000-3-2 /A2:2009**  
**EN61000-3-3:2008**

Diese Erklärung wird verantwortlich für LINDY-Elektronik GmbH abgegeben durch

Jürgen Lindenberg  
Geschäftsführer

Mannheim 18. Nov. 2011



Ref. LINDY S-Office: 720156 10.11.2011



## **CE/FCC Statement**

---

### ***CE Certification***

This equipment complies with the requirements relating to Electromagnetic Compatibility Standards EN55022/EN55024 and the further standards cited therein. It must be used with shielded cables only. It has been manufactured under the scope of RoHS compliance.

### ***CE Konformitätserklärung***

Dieses Produkt entspricht den einschlägigen EMV Richtlinien der EU für IT-Equipment und darf nur zusammen mit abgeschirmten Kabeln verwendet werden.

Diese Geräte wurden unter Berücksichtigung der RoHS Vorgaben hergestellt.

Die formelle Konformitätserklärung können wir Ihnen auf Anforderung zur Verfügung stellen

### ***FCC Certification***

This equipment has been tested and found to comply with the limits for a Class B digital device, pursuant to part 15 of the FCC Rules. These limits are designed to provide reasonable protection against harmful interference in a residential installation.

You are cautioned that changes or modification not expressly approved by the party responsible for compliance could void your authority to operate the equipment.

This device complies with part 15 of the FCC Rules.

Operation is subject to the following two conditions:

1. This device may not cause harmful interference, and
2. This device must accept any interference received, including interference that may cause undesired operation.

---

## **LINDY Herstellergarantie – Hinweis für Kunden in Deutschland**

LINDY gewährt für dieses Produkt über die gesetzliche Regelung in Deutschland hinaus eine zweijährige Herstellergarantie ab Kaufdatum. Die detaillierten Bedingungen dieser Garantie finden Sie auf der LINDY Website aufgelistet bei den AGBs.

## Recycling Information

---



### **WEEE (Waste of Electrical and Electronic Equipment), Recycling of Electronic Products**

#### **Europe, United Kingdom**

In 2006 the European Union introduced regulations (WEEE) for the collection and recycling of all waste electrical and electronic equipment. It is no longer allowable to simply throw away electrical and electronic equipment. Instead, these products must enter the recycling process.

Each individual EU member state has implemented the WEEE regulations into national law in slightly different ways. Please follow your national law when you want to dispose of any electrical or electronic products. More details can be obtained from your national WEEE recycling agency.

#### **Germany / Deutschland**

Die Europäische Union hat mit der WEEE Direktive Regelungen für die Verschrottung und das Recycling von Elektro- und Elektronikprodukten geschaffen. Diese wurden im Elektro- und Elektronikgerätegesetz – ElektroG in deutsches Recht umgesetzt. Dieses Gesetz verbietet das Entsorgen von entsprechenden, auch alten, Elektro- und Elektronikgeräten über die Hausmülltonne! Diese Geräte müssen den lokalen Sammelsystemen bzw. örtlichen Sammelstellen zugeführt werden! Dort werden sie kostenlos entgegen genommen. Die Kosten für den weiteren Recyclingprozess übernimmt die Gesamtheit der Gerätehersteller.

#### **France**

En 2006, l'union Européenne a introduit la nouvelle réglementation (DEEE) pour le recyclage de tout équipement électrique et électronique.

Chaque Etat membre de l' Union Européenne a mis en application la nouvelle réglementation DEEE de manières légèrement différentes. Veuillez suivre le décret d'application correspondant à l'élimination des déchets électriques ou électroniques de votre pays.

#### **Italy**

Nel 2006 l'unione europea ha introdotto regolamentazioni (WEEE) per la raccolta e il riciclo di apparecchi elettrici ed elettronici. Non è più consentito semplicemente gettare queste apparecchiature, devono essere riciclate. Ogni stato membro dell' EU ha tramutato le direttive WEEE in leggi statali in varie misure. Fare riferimento alle leggi del proprio Stato quando si dispone di un apparecchio elettrico o elettronico.

Per ulteriori dettagli fare riferimento alla direttiva WEEE sul riciclaggio del proprio Stato.



Tested to Comply with FCC standards  
For Home and Office Use

LINDY No 32700

2<sup>nd</sup> Edition, October 2012

[www.lindy.com](http://www.lindy.com)