

# LINDY®

## CONNECTION PERFECTION

---

### 4K HDMI 4x4 Matrix

*User Manual*

*English*

---



No. 38051

[www.lindy.com](http://www.lindy.com)

CE

FCC

Tested to Comply with  
FCC Standards  
For Home and Office Use!



Introduction

Thank you for purchasing the LINDY 4K HDMI 4x4 Matrix with remote control. This high performance HDMI Matrix allows any of the attached four sources to be show on any of the four displays simultaneously. An Infra-red remote control is supplied to make switching between sources and displays easier.

Package Contents

- HDMI 4x4 4K Matrix
- 12V 2A DC Multi Country PSU
- Remote control
- This manual

Features

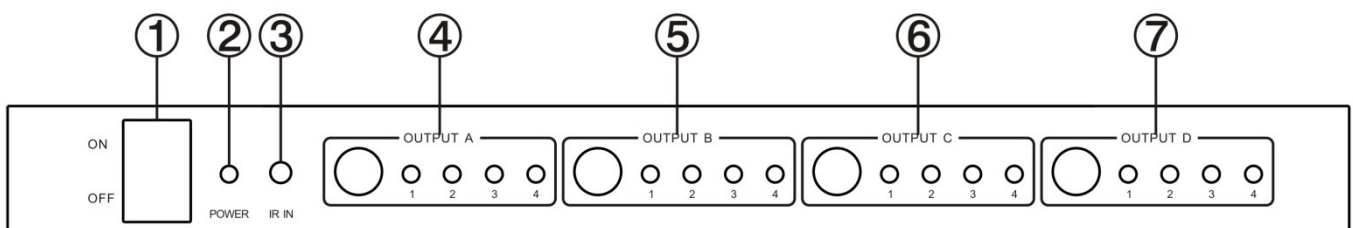
- Supports display resolutions up to 4Kx2K@30Hz,1080P@120Hz,and 1080P 3D@60Hz
- 3D HDMI 1.4a video format support
- 3D video support including Frame Packing for all 3D formats up to a 297MHz TMDS clock
- Supports deep colour up to 48-bit per pixel
- HDCP 1.4 support (INPUT), HDCP v1.4a protocol compliant (OUTPUT)
- Supports the reception of any audio data conforming to the HDMI specification 1.4 such as L-PCM at up to 192kHz,compressed audio (IEC 61937), DSD, DST, DTS and HBR
- Full colorimetric including sYCC601, Adobe RGB, Adobe YCC601,xvYCC extended gamut colour
- Operates for TMDS clock frequencies up to 300MHz

Specification

- Frequency Bandwidth: 2.97Gbps
- Input Ports: 4 x HDMI Female input ports
- Output Ports: 4 x HDMI Female output ports
- Power Supply: DC 12V 2A
- ESD Protection Human Body Model: ± 8kV (air-gap discharge) ± 4kV (contact discharge)
- Dimensions: (mm) 113(W) X 260 (D) X 26 (H)
- Weight: 750g
- Operating Temperature: 0°C ~ 40°C / 32°F ~ 104°F
- Storage Temperature: -20°C ~ 60°C / -4°F ~ 140°F
- Relative Humidity: 20 ~ 90% RH (Non-condensing)
- Power Consumption: 20W Max

Operation

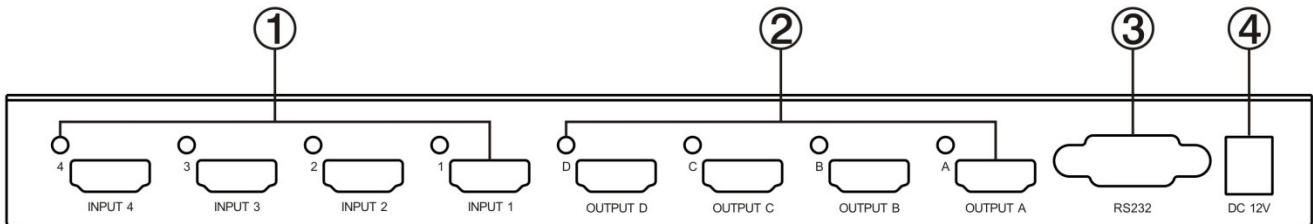
Front Panel



1. ON/OFF: Power on/off switch

2. POWER: This red LED illuminates when the device is connected with power supply
3. IR IN: Remote control signal receive
4. OUTPUT A: Press this button to select the input source to HDMI OUTPUT A, and the red LED will illuminate when selecting corresponding input
5. OUTPUT B: Press this button to select the input source to HDMI OUTPUT B, and the red LED will illuminate when selecting corresponding input
6. OUTPUT C: Press this button to select the input source to HDMI OUTPUT C, and the red LED will illuminate when selecting corresponding input
7. OUTPUT D: Press this button to select the input source to HDMI OUTPUT D, and the red LED will illuminate when selecting corresponding input

**Rear Panel**



1. INPUT PORTS: The LED's will illuminate when a HDMI signal is detected
2. OUTPUT PORTS: The LED's will illuminate when the TV signal is detected
3. RS232: This port can control the matrix via a PC
4. DC 12V: Plug the 12V DC power supply into the unit and connect the adapter to AC wall outlet

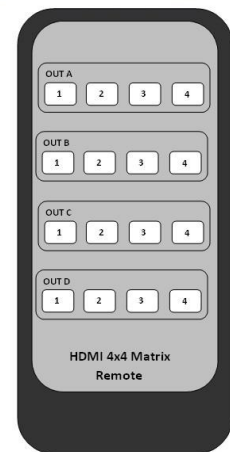
**Remote control**

OUT A: Press any of the four buttons to select a source signal

OUT B: Press any of the four buttons to select a source signal

OUT C: Press any of the four buttons to select a source signal

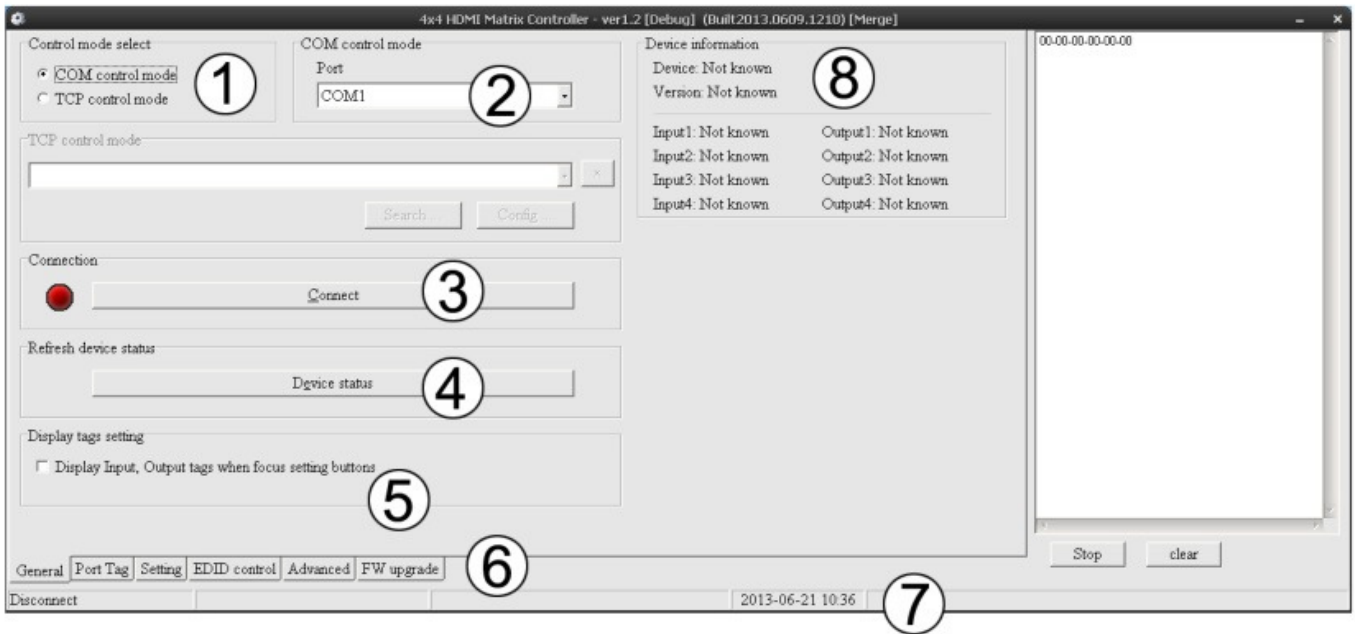
OUT D: Press any of the four buttons to select a source signal



**Software Control**

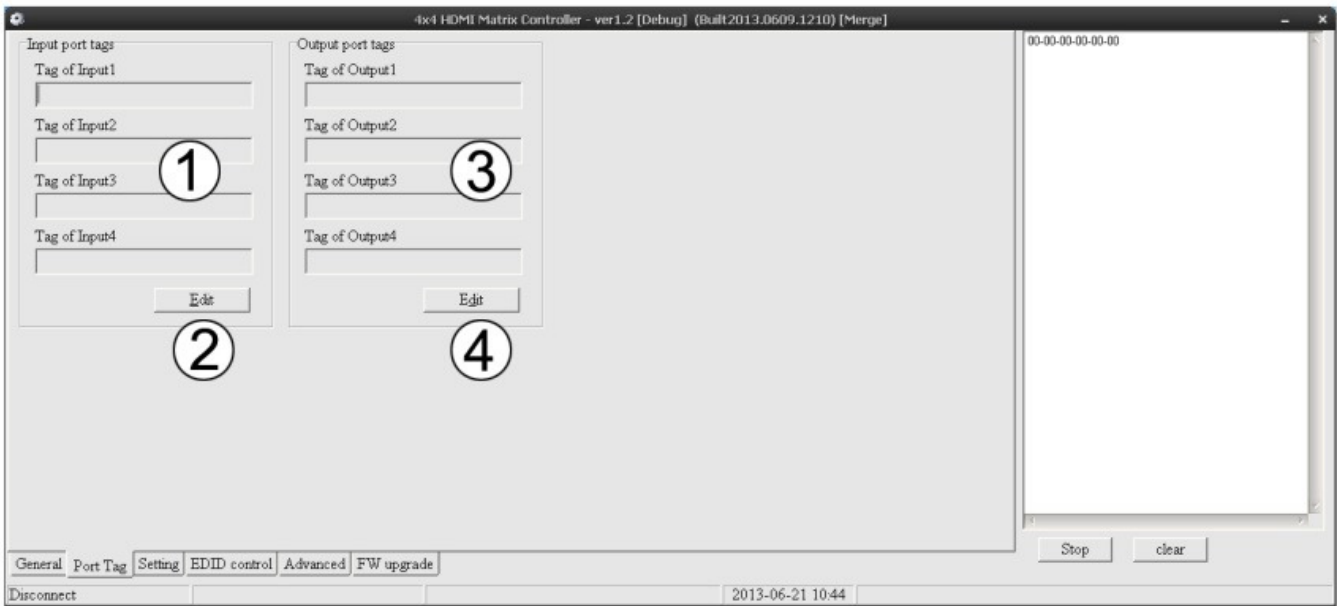
General page

1. Control mode select: Only COM control mode is supported with this model
2. Select RS232 COM port
3. Click to connect or disconnect PC and Matrix
4. Click to refresh device status
5. To enable or disable Input/Output tags displayed when setting buttons on "Setting" page
6. Click to select tab
7. Status bar:
  - RS232 COM port connection
  - Communication status
  - Prompt of operation messages
  - Time and Date
8. Device information display area



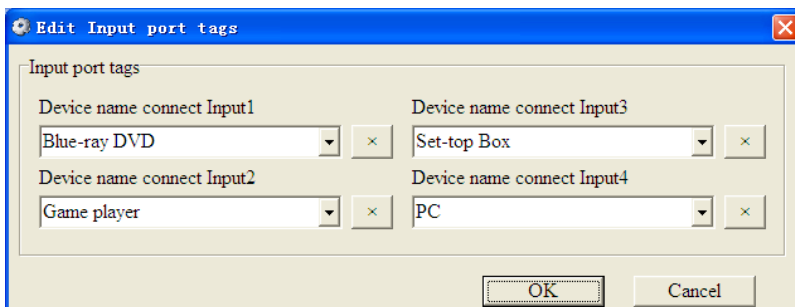
Port Tag Page

- 1. Input port tags
- 2. Click to edit Input port tags
- 3. Output port tags
- 4. Click to edit Output port tags



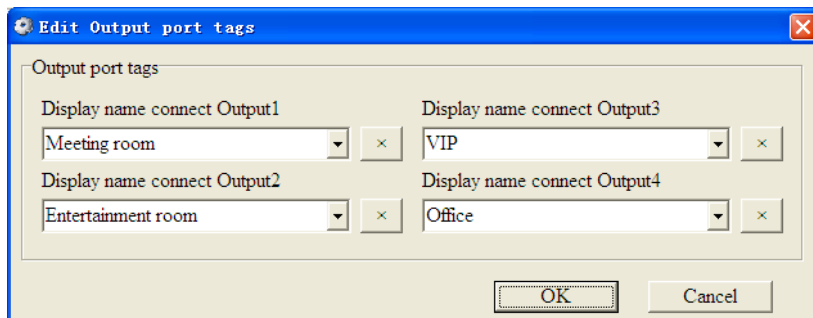
Edit Input port tags:

To edit the INPUT port tags, click edit and then add your own name in the area provided

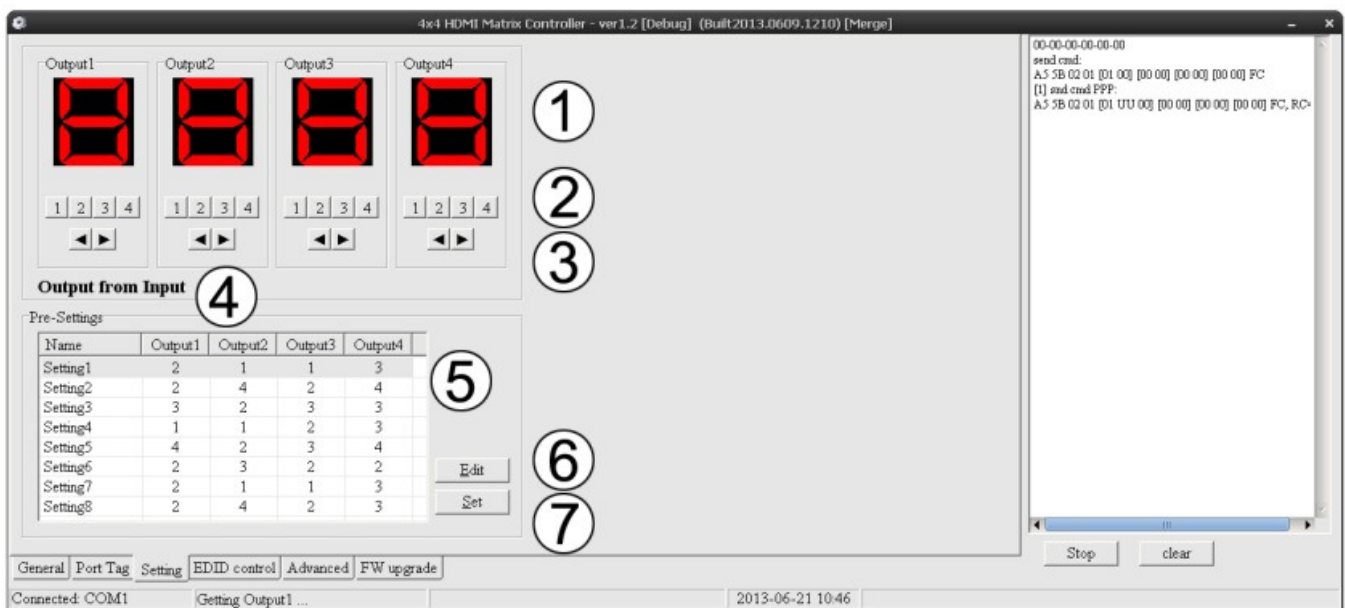


Edit Output port tags:

To edit the OUTPUT port tags, click edit and then add your own name in the area provided



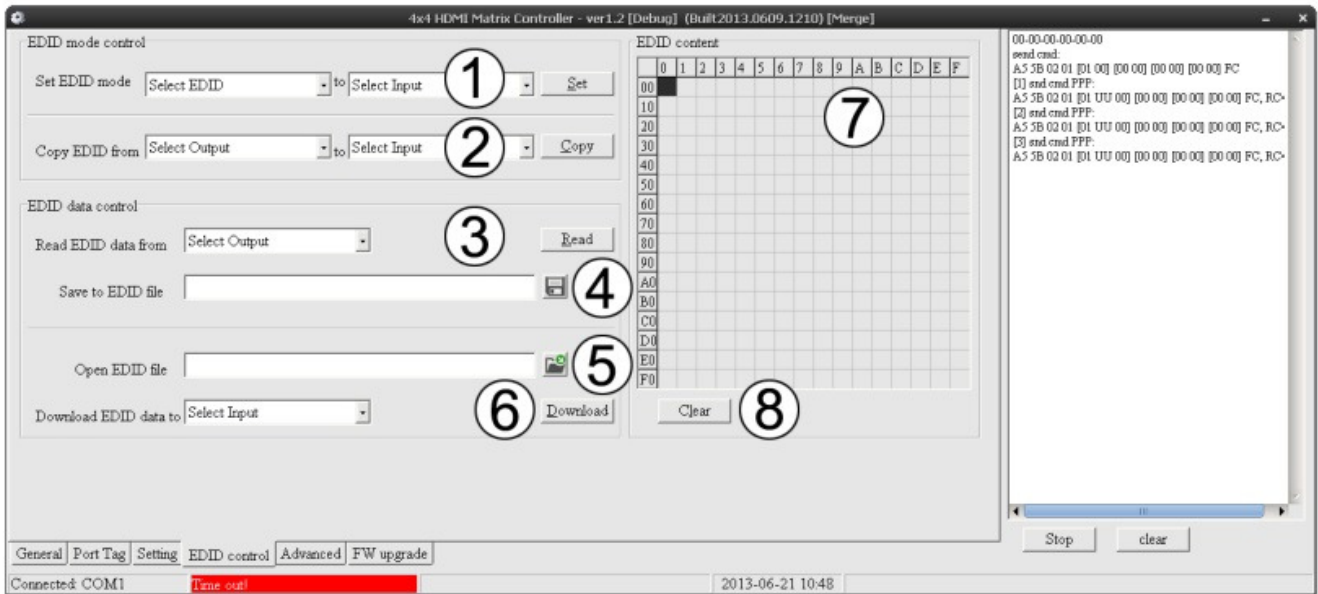
Setting page



1. Display's the Input number for respective Output
2. Click to select Input port for respective Output port
3. Click to select previous or next Input port for respective Output port
4. Display Input to Output with tag information when mouse moves over the buttons referred to in 2
5. Pre-Setting items
6. Click to edit selected pre-setting item
7. Set selected pre-setting item to Matrix

EDID Control page

1. Set EDID mode for selected Input port or All Input ports, click "Set" button to complete action. "Auto EDID mode" can only be set for "All Inputs"
2. Copy EDID from Output port to selected Input port or All Input ports, click "Copy" button to complete action
3. Read EDID content from Output port and display in grid, click "Read" button to complete action
4. Save EDID content which displayed in grid to binary file (file extension is ".bin")
5. Open EDID binary file and display in grid
6. Download EDID content which displayed in grid to selected Input port or All Input ports, click "Download" button to complete action
7. EDID content displaying grid
8. Click to clear EDID content displayed in grid



### Advanced Page

- 1. Enable and disable IR control
- 2. 3. & 4. TCP Mode is not supported



### FW upgrade Page

Firmware upgrade is not supported on this model

### EDID Dipswitch

Adjust the dipswitches on the side of the matrix to force the required setting:

#### EDID SELECTOR

1 1 1 1



0 0 0 0

(0 is down, 1 is up)

0000	Auto mode (default)
0001	1080i, Stereo Audio 2.0
0010	1080i, Dolby/DTS 5.1
0011	1080i, HD Audio 7.1
0100	1080p, Stereo Audio 2.0
0101	1080p, Dolby/DTS5.1
0110	1080p, HD Audio 7.1
0111	3D, Stereo Audio 2.0
1000	3D, Dolby/DTS5.1
1001	3D, HD Audio 7.1
1010	4Kx2K, Stereo Audio 2.0
1011	4Kx2K, Dolby/DTS5.1
1100	4Kx2K, HD Audio 7.1
1101	1024x768 DVI
1110	1920x1080 DVI
1111	PC Control



## **CE/FCC Statement**

---

### ***CE Certification***

This equipment complies with the requirements relating to Electromagnetic Compatibility Standards EN55022/EN55024 and the further standards cited therein. It must be used with shielded cables only. It has been manufactured under the scope of RoHS compliance.

### ***CE Konformitätserklärung***

Dieses Produkt entspricht den einschlägigen EMV Richtlinien der EU für IT-Equipment und darf nur zusammen mit abgeschirmten Kabeln verwendet werden.

Diese Geräte wurden unter Berücksichtigung der RoHS Vorgaben hergestellt.

Die formelle Konformitätserklärung können wir Ihnen auf Anforderung zur Verfügung stellen

### ***FCC Certification***

This equipment has been tested and found to comply with the limits for a Class B digital device, pursuant to part 15 of the FCC Rules. These limits are designed to provide reasonable protection against harmful interference in a residential installation.

You are cautioned that changes or modification not expressly approved by the party responsible for compliance could void your authority to operate the equipment.

This device complies with part 15 of the FCC Rules.

Operation is subject to the following two conditions:

1. This device may not cause harmful interference, and
2. This device must accept any interference received, including interference that may cause undesired operation.

---

## **LINDY Herstellergarantie – Hinweis für Kunden in Deutschland**

LINDY gewährt für dieses Produkt über die gesetzliche Regelung in Deutschland hinaus eine zweijährige Herstellergarantie ab Kaufdatum. Die detaillierten Bedingungen dieser Garantie finden Sie auf der LINDY Website aufgelistet bei den AGBs.

## Recycling Information

---



### **WEEE (Waste of Electrical and Electronic Equipment), Recycling of Electronic Products**

#### **Europe, United Kingdom**

In 2006 the European Union introduced regulations (WEEE) for the collection and recycling of all waste electrical and electronic equipment. It is no longer allowable to simply throw away electrical and electronic equipment. Instead, these products must enter the recycling process.

Each individual EU member state has implemented the WEEE regulations into national law in slightly different ways. Please follow your national law when you want to dispose of any electrical or electronic products. More details can be obtained from your national WEEE recycling agency.

#### **Germany / Deutschland**

Die Europäische Union hat mit der WEEE Richtlinie Regelungen für die Verschrottung und das Recycling von Elektro- und Elektronikprodukten geschaffen. Diese wurden im Elektro- und Elektronikgerätegesetz – ElektroG in deutsches Recht umgesetzt. Dieses Gesetz verbietet das Entsorgen von entsprechenden, auch alten, Elektro- und Elektronikgeräten über die Hausmülltonne! Diese Geräte müssen den lokalen Sammelsystemen bzw. örtlichen Sammelstellen zugeführt werden! Dort werden sie kostenlos entgegen genommen. Die Kosten für den weiteren Recyclingprozess übernimmt die Gesamtheit der Gerätehersteller.

#### **France**

En 2006, l'union Européenne a introduit la nouvelle réglementation (DEEE) pour le recyclage de tout équipement électrique et électronique.

Chaque Etat membre de l' Union Européenne a mis en application la nouvelle réglementation DEEE de manières légèrement différentes. Veuillez suivre le décret d'application correspondant à l'élimination des déchets électriques ou électroniques de votre pays.

#### **Italy**

Nel 2006 l'unione europea ha introdotto regolamentazioni (WEEE) per la raccolta e il riciclo di apparecchi elettrici ed elettronici. Non è più consentito semplicemente gettare queste apparecchiature, devono essere riciclate. Ogni stato membro dell' EU ha tramutato le direttive WEEE in leggi statali in varie misure. Fare riferimento alle leggi del proprio Stato quando si dispone di un apparecchio elettrico o elettronico.

Per ulteriori dettagli fare riferimento alla direttiva WEEE sul riciclaggio del proprio Stato.

LINDY No **38051**

1<sup>st</sup> Edition, August 2013

[www.lindy.com](http://www.lindy.com)



Tested to Comply with  
FCC Standards  
For Home and Office Use!