

USB Data Dock: No.42687

2.5" HDD Trays: No. 42988, 42989, 42978, 42979

www.lindy.com

Included Items

USB Data Dock:

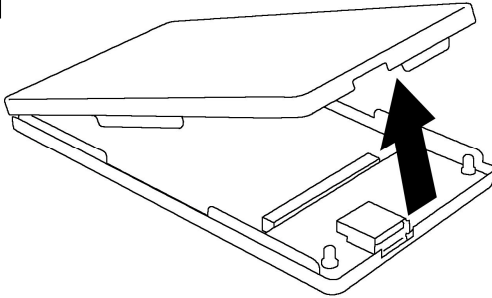
1 x USB Data Dock
2 x 2.5" SATA HDD Tray
1 x Internal USB cable
4 x Installation screws
1 x Dual Power USB Cable
1 x Carry Wallet
This manual

2.5" HDD Data Tray:

1 x 2.5" HDD Tray
1 x Dual Power USB Cable
1 x Carry Wallet
This manual

2.5" HDD Data Tray Installation

1

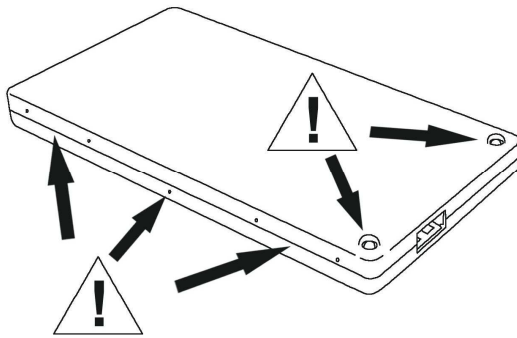


- UK** Remove the top cover from the drive tray. You may find it easier to lever the cover upwards from the USB port opening.
- DE** Öffnen Sie die beiden Gehäusehälften des Festplattengehäuses. Sie werden lediglich durch einen federnden Klemmmechanismus gehalten.
- FR** Retirez le dessus du boîtier. Vous pouvez l'ouvrir facilement en faisant levier depuis le port USB.
- IT** Rimuovere la metà superiore dell'astuccio. L'operazione risulta più semplice facendo leva sulla feritoia della porta USB.

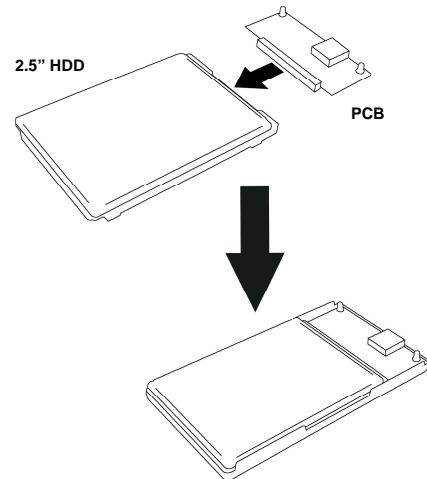


3

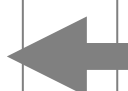
- UK** To complete the installation, carefully replace the top cover. Ensure the LEDs and the case tabs are correctly located.
- DE** Fügen Sie sorgfältig die beiden Gehäusehälften wieder aufeinander. Achten Sie auf das korrekte Einrasten der Gehäusehälften und die Positionierung der LEDs!
- FR** Pour terminer l'installation, remplacez le dessus du boîtier avec précaution. Assurez vous que les LEDs soient visibles.
- IT** Per completare l'installazione, risistemare la copertura. Assicurarsi che i LED siano allocati correttamente.



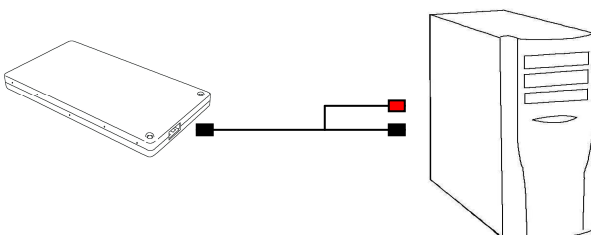
2



- UK** Remove the PCB and protective card. Carefully plug your 2.5" HDD into the PCB and then place them both into the drive tray.
- DE** Setzen Sie die Platine mit dem Anschlussstecker auf die Festplatte! Die Schutzfolie gehört unter die Platinenseite der Festplatte!
- FR** Retirez le PCB et la carte protectrice. Branchez soigneusement votre disque 2.5" dans le PCB et placez le tout dans le boîtier.
- IT** Per completare l'installazione, risistemare la copertura. Assicurarsi che i LED siano allocati correttamente.



4



- UK** Connect the data tray(s) to an external USB port using the supplied Dual Power USB Cable. For the 2.5" HDD Tray, you can connect the red USB connector to a second USB port for additional power.
- DE** Schließen Sie das Gehäuse mit dem Dual Power USB-Kabel an einen USB Port / Hub mit Stromversorgung an. Sie benötigen den roten USB Stecker nur falls ihre Festplatte viel Strom benötigt (zuerst anschließen).
- FR** Connectez le boîtier data tray à un port externe USB avec le câble Dual Power USB fourni. Pour le tiroir 2.5" HDD, vous pouvez connecter le connecteur USB rouge à un second port USB pour plus de puissance.
- IT** Collegare gli/astucci/o in una porta USB esterna tramite il cavo USB Dual Power incluso nella fornitura. Per alimentare HD da 2.5", collegare anche il connettore USB rosso in una seconda porta USB.

Data Dock Installation

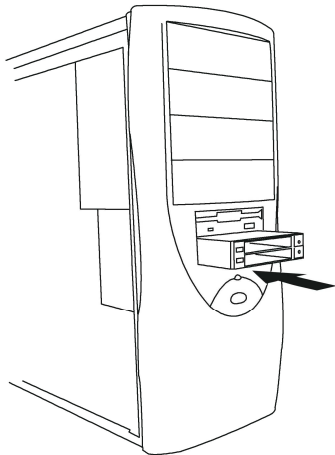
1

UK Switch off and unplug your computer! Remove your computer's case cover and slide the Data Dock into an available 3.5" bay. Secure the Data Dock using the 4 supplied screws

DE Trennen Sie Ihren Rechner von der Netzspannung und installieren Sie das Data Dock in einem freien 3,5" Schacht mit den beiliegenden Schrauben.

FR Eteignez et débranchez votre ordinateur! Retirez le cache et glissez le Data Dock dans une baie 3,5" libre. Fixez le boîtier rack data dock avec les 4 vis fournies

IT Spegner e scollegare il computer! Rimuovere la cover di uno slot da 3,5" libero ed inserire il Data Dock. Assicurare il Data Dock al case utilizzando le 4 viti incluse nella fornitura.



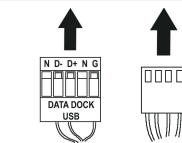
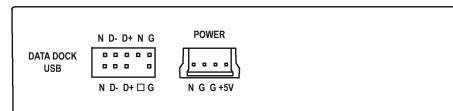
2

UK Use the supplied internal USB cable and a 3.5" type power plug from the PC's PSU to make the connections as illustrated. Installation is now complete; reassemble and switch on your PC.

DE 1) Das beiliegende interne USB Kabel verbindet das Data Dock mit Mainboard bzw. USB Karte. 2) Rechts hinten wird ein 3,5" Stromanschluss vom PC Netzteil angeschlossen.

FR Utilisez le câble USB interne et une prise d'alimentation du PC tel qu'illustré ci-dessous. L'installation est maintenant terminée; réalimentez et démarrez votre ordinateur!

IT Utilizzare il cavo USB interno e collegarlo alla PSU del PC come illustrato nello schema sottostante. L'installazione è completata; riassembleare ed accendere il computer!



To Motherboard
USB Pin Header

! Refer to your motherboard manual for the location of the USB Pin Header
! Die Position des USB Anschluss finden Sie in Ihrem Mainboard Handbuch!
! Référez vous au manuel de votre carte mère pour repérer le connecteur USB
! Consultare il manuale della motherboard per effettuare il collegamento

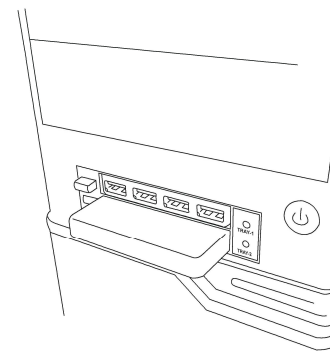
3

UK You can plug the data trays into Tray Input 1 or 2. The LED will glow blue to indicate correct insertion. To eject the data tray, click the 'Safe Removal' icon on your Windows task bar and then press the eject button.

DE Sie können die Einschübe beliebig in beiden Schächten des Data Dock verwenden. Eine blaue LED zeigt Betriebsbereitschaft an. Verwenden Sie „Hardware sicher entfernen“ bevor Sie einen Einschub auswerfen.

FR Vous pouvez connecter les data trays (tiroirs) dans l'entrée 1 ou 2. La LED s'allumera bleue pour indiquer une bonne insertion. Pour éjecter le data tray, cliquez sur 'Retirez mon périphérique' dans la barre des tâches.

IT E' possibile collegare gli astucci nell'ingresso 1 o 2. Si accenderà il LED blu per indicare il collegamento corretto. Per estrarre l'astuccio, cliccare l'icona 'Safe Removal' sul task di Windows e premere il tasto eject.



Click the Task Bar 'Safe Removal' icon before ejecting a data tray



CE Statement

This device complies with the European Regulations for Electromagnetic Compatibility (EMC) of the European Union and it is equipped with the CE mark. This unit has to be used with high quality shielded connection cables. Only if these high quality shielded cables are used it can be sure that the EMC compatibility is not adversely influenced.

FCC Statement

Shielded cables must be used with this equipment to maintain compliance with radio frequency energy emission regulations and ensure a suitably high level of immunity to electromagnetic disturbances.

FCC Warning

This equipment has been tested and found to comply with the limits for a Class B Digital device, pursuant to part 15 of the FCC Rules. These limits are designed to provide reasonable protection against harmful interference in a residential installation. This equipment generates, uses, and can radiate radio frequency energy and, if not installed and used in accordance with the instructions, may cause harmful interference to radio communications. However, there is no guarantee that interference will not occur in a particular installation. If this equipment does cause harmful interference to radio or television reception, which can be determined by turning the equipment off and on, the user is encouraged to try to correct the interference by one or more of the following measures:

- Reorient or relocate the receiving antenna
- Increase the separation between the equipment and receiver
- Connect the equipment into an outlet on a circuit different from that to which the receiver is connected
- Consult the dealer or an experienced technician for help

You are cautioned that changes or modifications not expressly approved by the party responsible for compliance could void your authority to operate the equipment.

WEEE (Waste of Electrical and Electronic Equipment), Recycling of Electronic Products



In 2006 the European Union introduced regulations (WEEE) for the collection and recycling of all waste electrical and electronic equipment. It is no longer allowable to simply throw away electrical and electronic equipment. Instead, these products must enter the recycling process.

Each individual EU member state has implemented the WEEE regulations into national law in slightly different ways. Please follow your national law when you want to dispose of any electrical or electronic products.

More details can be obtained from your national WEEE recycling agency.

Germany / Deutschland

Die Europäische Union hat mit der WEEE Richtlinie umfassende Regelungen für die Verschrottung und das Recycling von Elektro- und Elektronikprodukten geschaffen. Diese wurden von der Bundesregierung im Elektro- und Elektronikgerätegesetz – ElektroG in deutsches Recht umgesetzt. Dieses Gesetz verbietet vom 24. März 2006 an das Entsorgen von Elektro- und Elektronikgeräten über die Hausmülltonne! Diese Geräte müssen den lokalen Sammelsystemen bzw. örtlichen Sammelstellen zugeführt werden! Dort werden sie kostenlos entgegen genommen. Die Kosten für den weiteren Recyclingprozess übernimmt die Gesamtheit der Gerätehersteller.

1st Edition November 2010



www.lindy.com