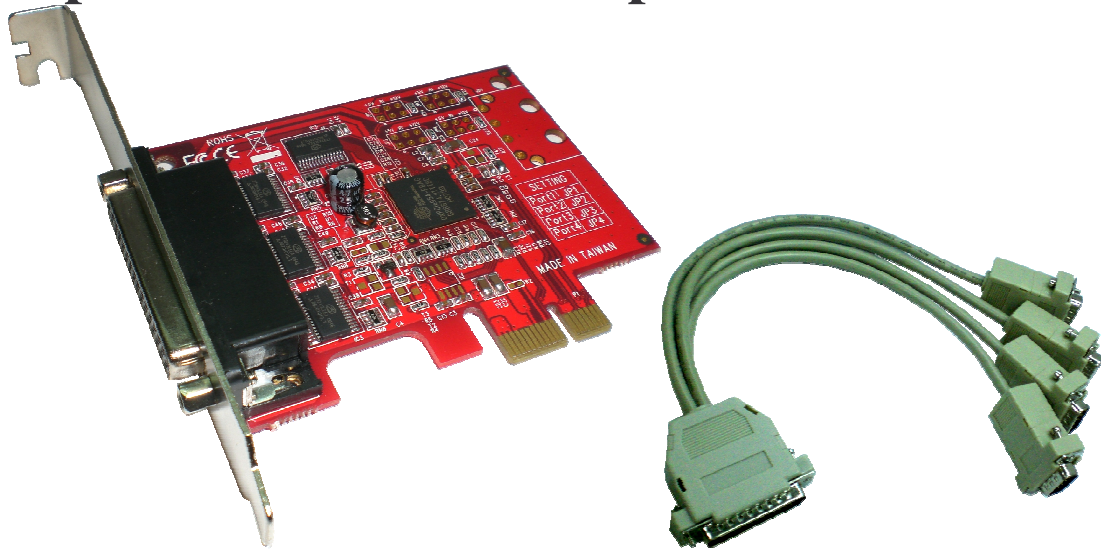


# 954ER4 Specification

## 4 ports RS-232 PCI-Express Serial cards



### FEATURES

- 4 independent RS-232 serial ports with communication speeds up to 230 (921) Kbps
- Designed to meet PCI-Express Base Specification Revision 1.1
- Supports x1,x2,x4,x8,x16 (lane) PCI-Express Bus connector keys
- High speed 16C950 compatible UART controller on-board
- On-chip hardware auto flow control to guarantee no data loss
- Built-in 128K byte DMA software FIFO
- Certified by Microsoft WHQL,CE,FCC approval
- Support Linux,Microsoft DOS,Windows 2000/XP/2003 and Vista
- Ready of the Intel and AMD 32/64-bit CPU System

### Overview

eMegatech PCI-Express serial communication board meets the new interface standard for expansion board. It is compatible with PCI-Express x1,x2,x4,x8,x16 lane Bus, enabling this board to be installed in any PCI-Express capable PC system. Majority of today's motherboard no longer come with serial ports or only have one port, with eMegatech PCI-Express serial board, users can add or expand 8 ports of serial interface on their system. allowing them to connect their serial devices. eMegatech PCI-Express Serial Board is the advanced and high efficient solution for commercial and industrial automation applications.

### Specifications

#### Serial communication

<b>Interface</b>	RS-232
<b>Controller</b>	OXFORD OXPCIe954
<b>Bus</b>	PCI-Express one lane (x1) Bus
<b>No. of port</b>	4 ports
<b>Port Type</b>	DB9 Male
<b>IRQ &amp; IO</b>	Assigned by System
<b>FIFO</b>	128K byte DMA FIFO
<b>Baud rate</b>	96bps ~ 230 (921) Kbps

**Flow Control**     None , Xon/Xoff , RTS/CTS

## **Driver Support**

**Microsoft**        Windows 2000/XP/2003/Vista ( 32/64-bit )

**Linux Kernel**    2.6.x

## **Regulatory Approvals**

**Hardware**        CE , FCC

**Software**        WHQL

## **Operation Environment**

**Operation Temperature**    0 to 60°C

**Operation Humidity**        5 to 95% RH